



FROM BATHROOMS TO KITCHENS, IT'S INDIA'S TRU-CHOICE.

User-friendly
uPVC Plumbing Systems.



PIPES

Schedule 40 & 80
As per ASTM D - 1785 (Plain Ended).

FITTINGS

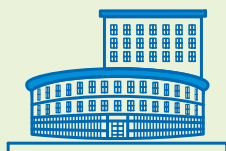
Schedule 40 as per ASTM D - 2466.
Schedule 80 as per ASTM D - 2467.

PRODUCT RANGE

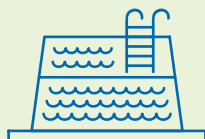
Pipes : 1/2" - 6"
Fittings : 1/2" - 6"



EXTENSIVELY USED IN



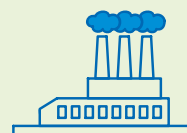
COMMERCIAL



SWIMMING POOLS



RESIDENTIAL



INDUSTRY

**COUPLER
(SCH 80)**



1/2" to 4"

**EQUAL TEE
(SCH 80)**



1/2" to 4"

**ELBOW
(SCH 80)**



1/2" to 4"

**UNION
(SCH 80)**



1/2" to 2"

**END CAP
(SCH 80)**



1/2" to 2"

**ELBOW 45°
(SCH 80)**



1/2" to 2"

**M. T. A.
(SCH 80)**



1/2" to 4"

**REDUCING BUSH
(SCH 80)**



3/4" & 1/2" to 2" x 1/2"

**REDUCING TEE
(SCH 80)**



3/4" & 1/2" to 3" to 2 1/2"

**TANK CONNECTOR
MOULDED (SHORT BODY)
(SCH 80)**



1/2" to 2"

**BALL VALVES
(SCH 80)**



1/2" to 2"

**M. T. A.
(SCH 80)**



1/2" to 2"

**F. T. A.
(SCH 80)**



1/2" to 2"

**FEMALE THRD. ELBOW
(SCH 80)**



1/2"

**TIN
(SCH 80)**



50ml to 1000ml

**TUBE
(SCH 80)**



25ml to 50ml

CROSS OVER



1/2" to 1"

**FLANGE
(SCH 80)**



1/2" to 4"

**REDUCER
(SCH 80)**



1"x 1/2" to 2" x 1/2"

**FOUR WAY TEE
(SCH 80)**



1/2"

**COUPLER
(SCH 40)**



6"

**ELBOW
(SCH 40)**



6"

**TEE
(SCH 40)**



6"

**END CAP
(SCH 40)**



6"

**RED BUSH
(SCH 40)**



6" X 3" to 6" X 4"

**OPEN FLANGE
(SCH 40)**



1" to 4"

**BLIND FLANGE
(SCH 40)**



2 1/2" to 4"

APPLICATIONS

- Indoor and outdoor use for cold water applications.
- Residential complexes, commercial buildings, public utilities, swimming pools.
- RO & DM water plants.
- For concealed, down take & terrace looping.

NOTE:

1. Not for use with compressed air and gases.
2. Pressure rating of uPVC pipes & fittings is temperature related. Derating factor should be applied during designing & operation for higher temperature applications. For detailed data refer IS 4985 or contact us.

3. Installation of uPVC pipelines should be done in accordance with IS 7634 (Part - 3).
4. Flow velocity in the pipeline should not be greater than 1.5 meters/second.
5. For threaded pipes & fittings the working pressure at 23°C should be considered as 50% of rated.
6. Do not use uPVC pipes & fittings for hydro pneumatic applications.

MAJOR ADVANTAGES

- Lead-free material ensures safe drinking water.
- Exceptional corrosion resistance ensures constant flow over its lifetime.
- Light-weight but strong.
- Self-extinguishing (Does not support combustion).
- High impact resistance, ensures high quality performance at lower temperatures.
- Fast and easy installation.
- Long Life.

JOINTING METHOD

Solvent Joint & Threaded Joint

PIPE DIMENSIONS FOR uPVC PLUMBING SYSTEMS

Pressure for Pipes (Solvent Weld) at 23°C					
		Schedule 40		Schedule 80	
Nominal Bore	Outside Diameter	Wall Thickness	Working Pressure	Wall Thickness	Working Pressure
(Inch)	Kg/cm ²	(mm)	Kg/cm ²	(mm)	Kg/cm ²
1/2	21.34 ±0.10	2.77 + 0.51	42.20	3.73 + 0.51	59.75
3/4	26.67 ±0.10	2.87 + 0.51	33.75	3.91 + 0.51	48.50
1	33.40 ±0.13	3.38 + 0.51	31.60	4.55 + 0.53	44.25
1 1/4	42.16 ±0.13	3.56 + 0.51	26.00	4.85 + 0.58	36.60
1 1/2	48.26 ±0.15	3.68 + 0.51	23.25	5.08 + 0.61	33.00
2	60.32 ±0.15	3.91 + 0.51	19.65	5.54 + 0.66	28.10
2 1/2	73.02 ±0.18	5.16 + 0.61	21.10	7.01 + 0.84	29.55
3	88.90 ±0.20	5.49 + 0.66	18.25	7.62 + 0.91	26.00
4	114.30 ±0.23	6.02 + 0.71	15.50	8.56 + 1.02	22.50
6	168.28 ±0.28	7.11 + 0.86	12.60	10.97 +1.32	19.65

Working pressure for Fittings (Solvent Weld) at 23°C		
	Schedule 80	Schedule 40
Nominal Bore	Working Pressure	
(Inch)	Kg/cm ²	Kg/cm ²
1/2	35.85	25.30
3/4	29.10	20.25
1	26.55	18.95
1 1/4	21.95	15.60
1 1/2	19.80	13.95

Working pressure for Fittings (Solvent Weld) at 23°C		
	Schedule 80	Schedule 40
Nominal Bore	Working Pressure	
(Inch)	Kg/cm ²	Kg/cm ²
2	16.85	11.75
2 1/2	17.70	-
3	15.60	-
4	13.50	-
6	-	7.50